



BioFlix Animations Mitosis Slide Show

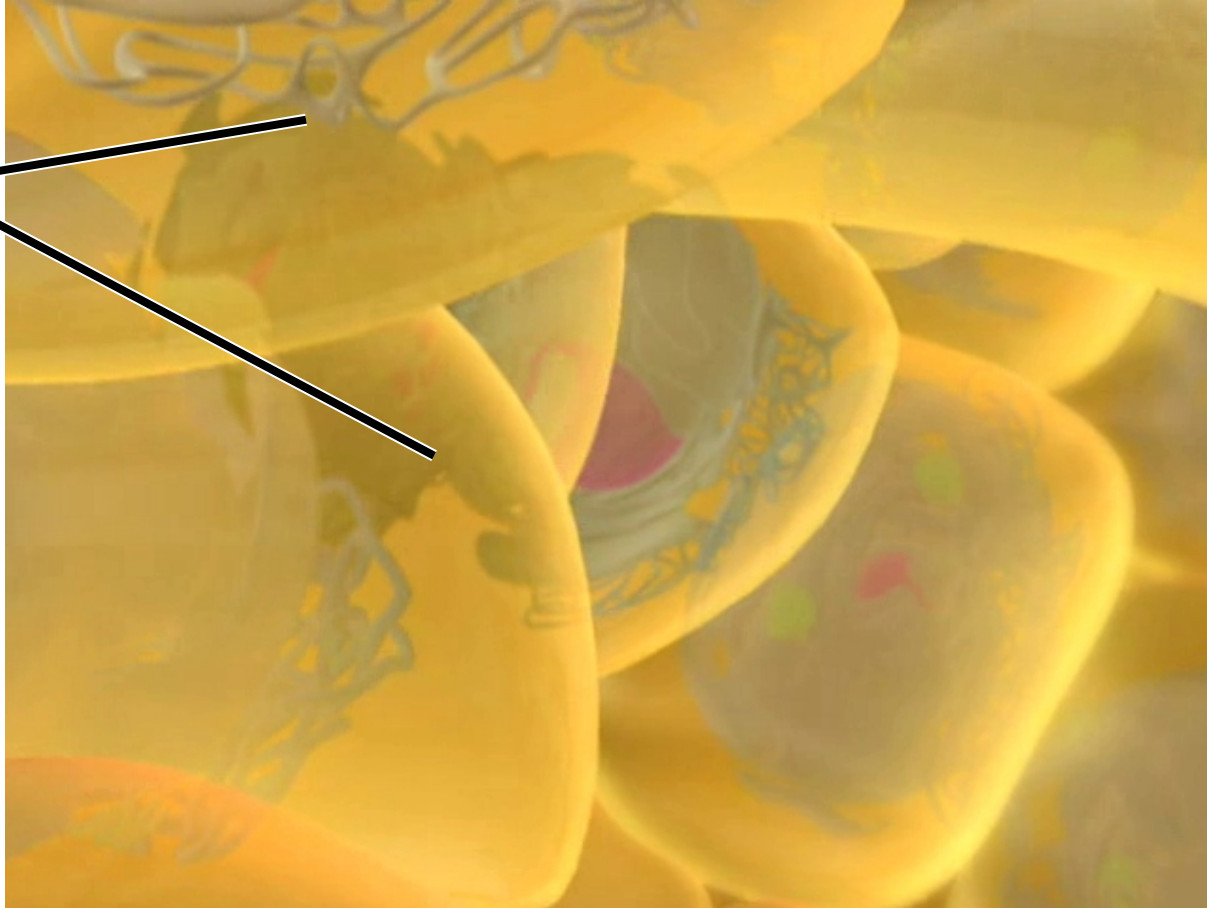
Copyright © 2007 Pearson Education, Inc.,
publishing as Pearson Benjamin Cummings



Interphase



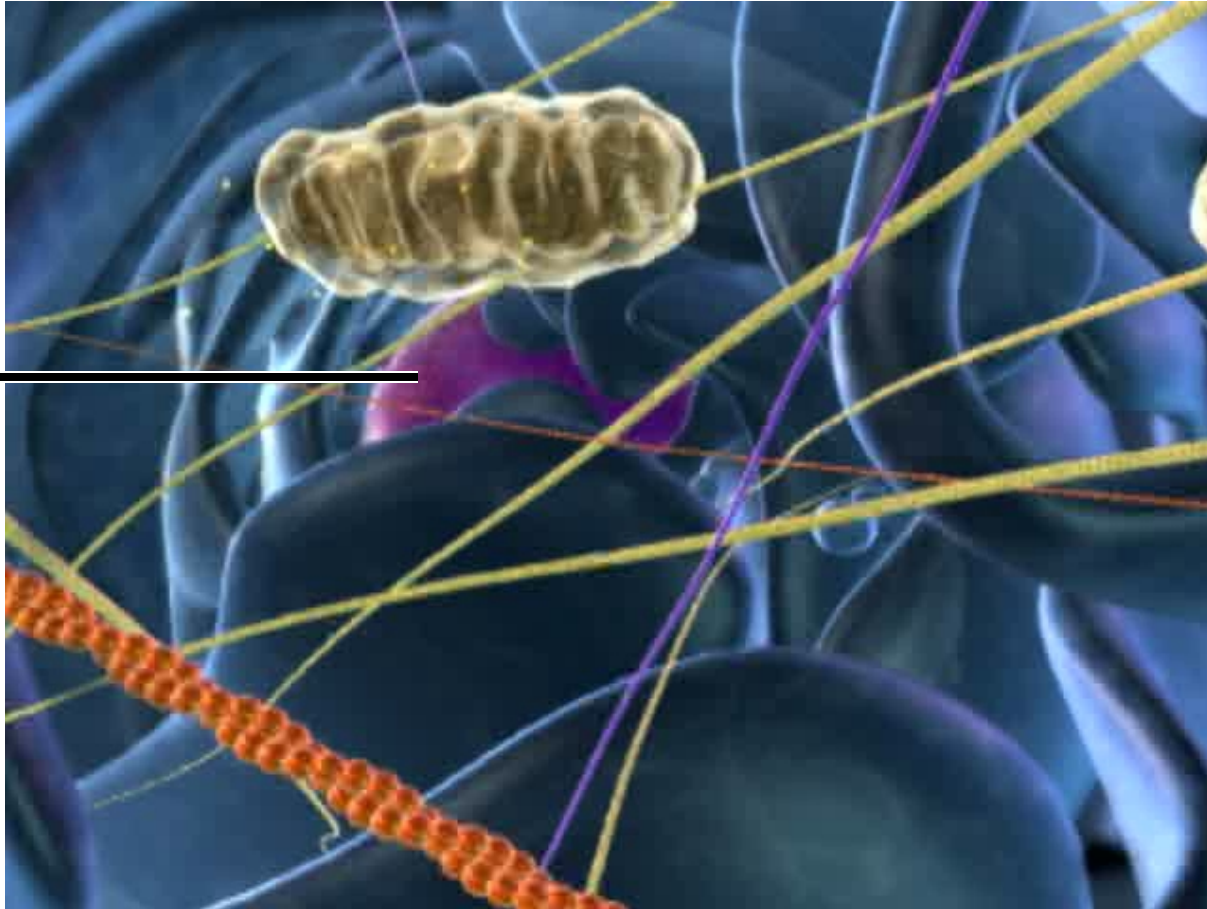
Skin
cells





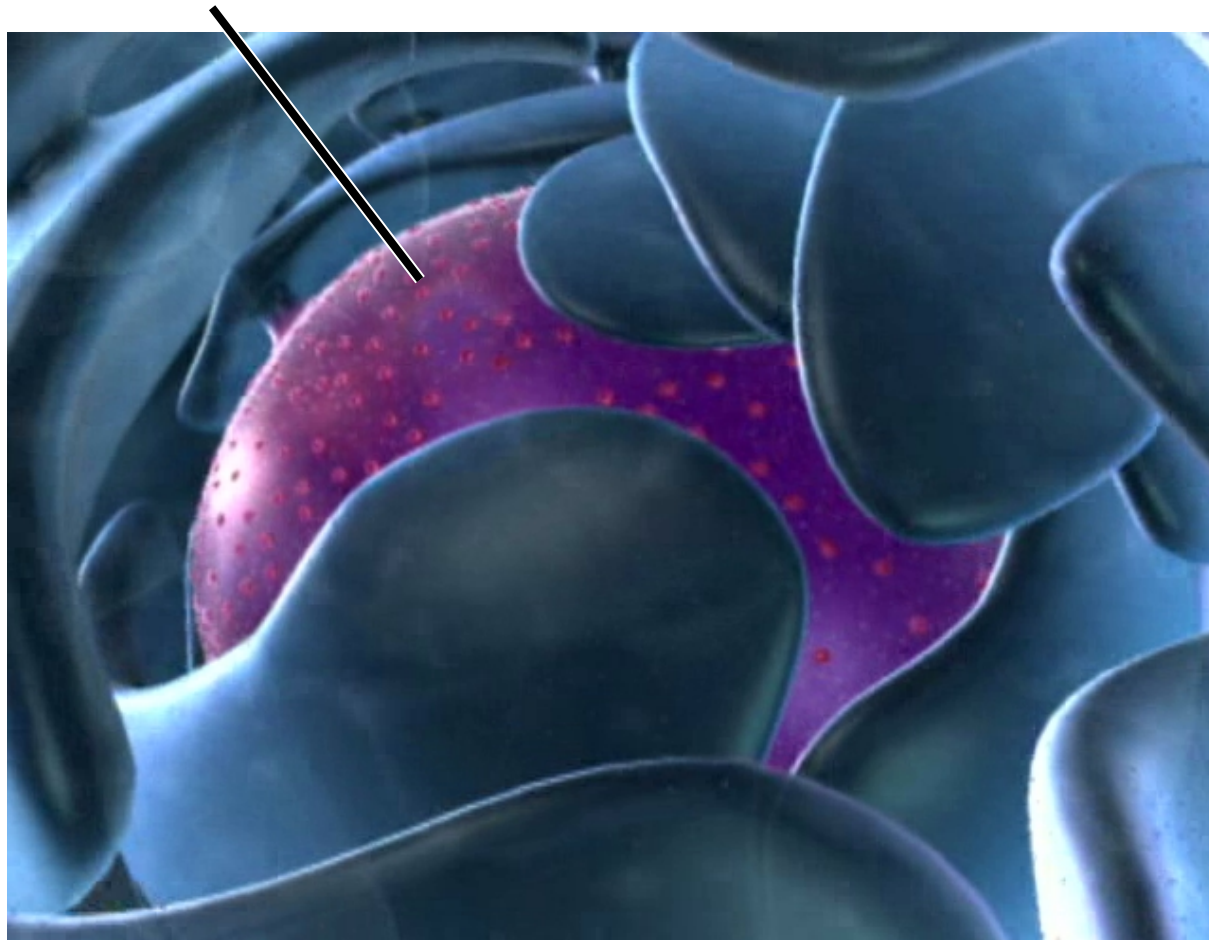
Inside skin cell

Nucleus





Nucleus





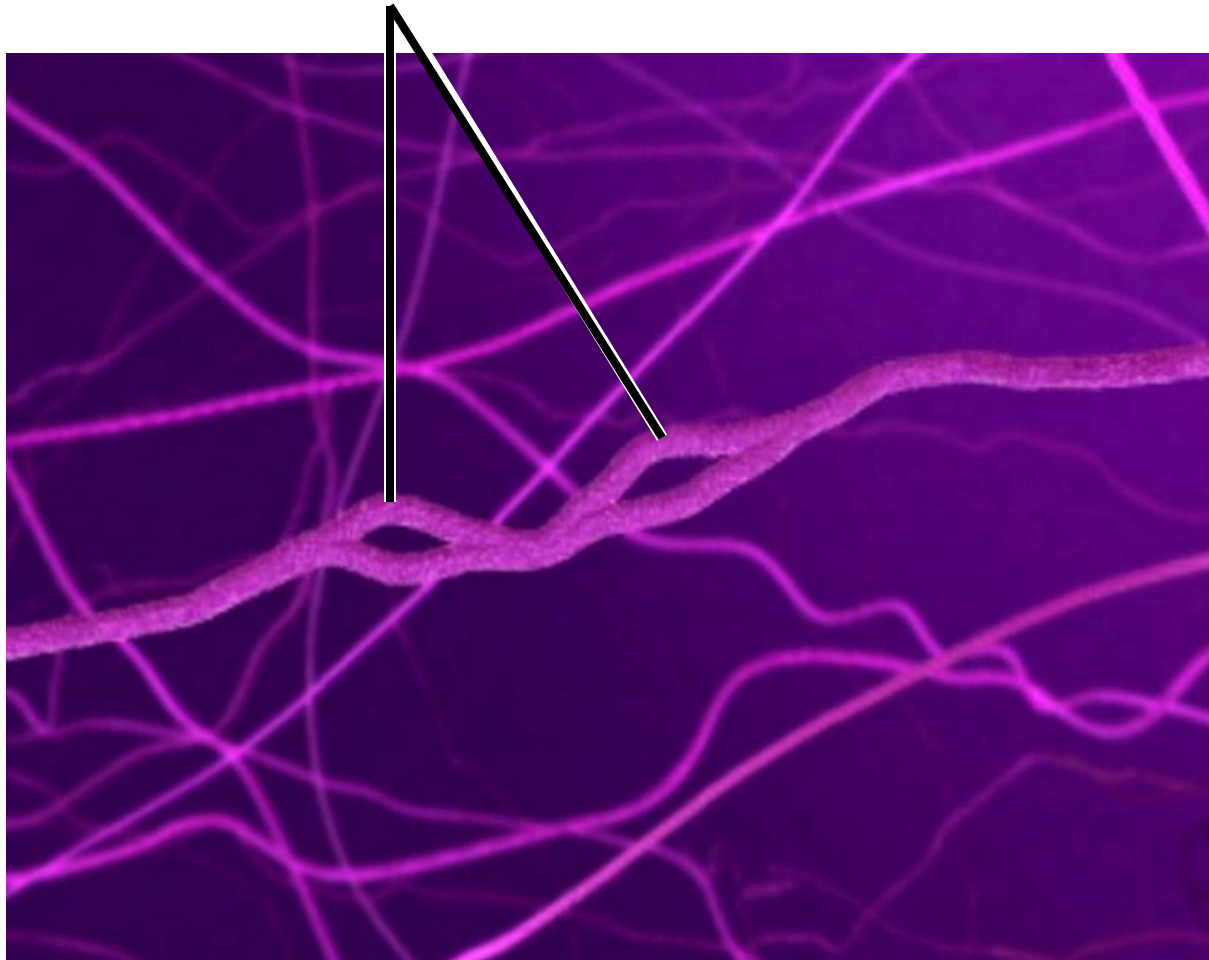
Inside the nucleus

Chromosomes





Replication bubbles on chromosome



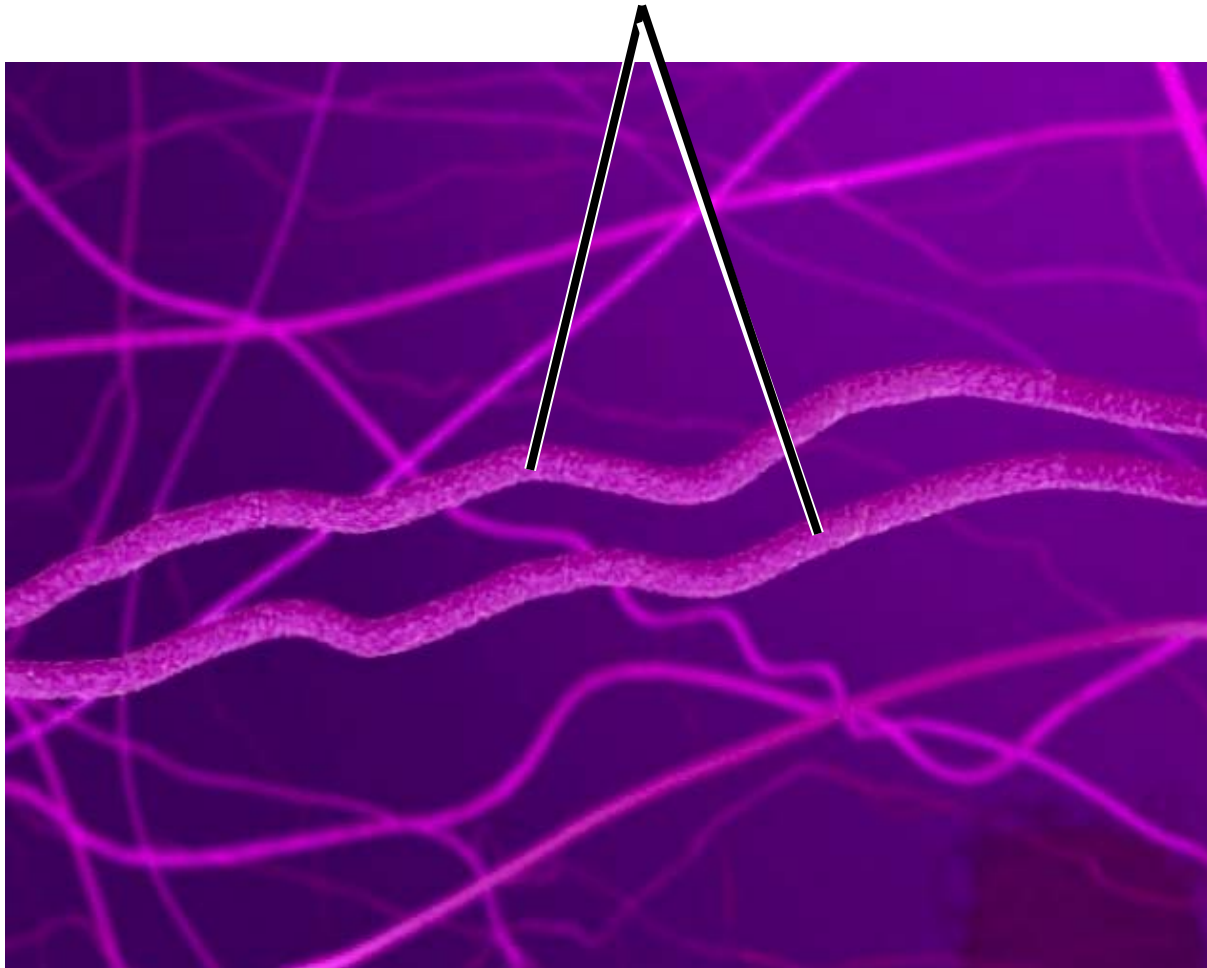


Merged replication bubble





Sister chromatids

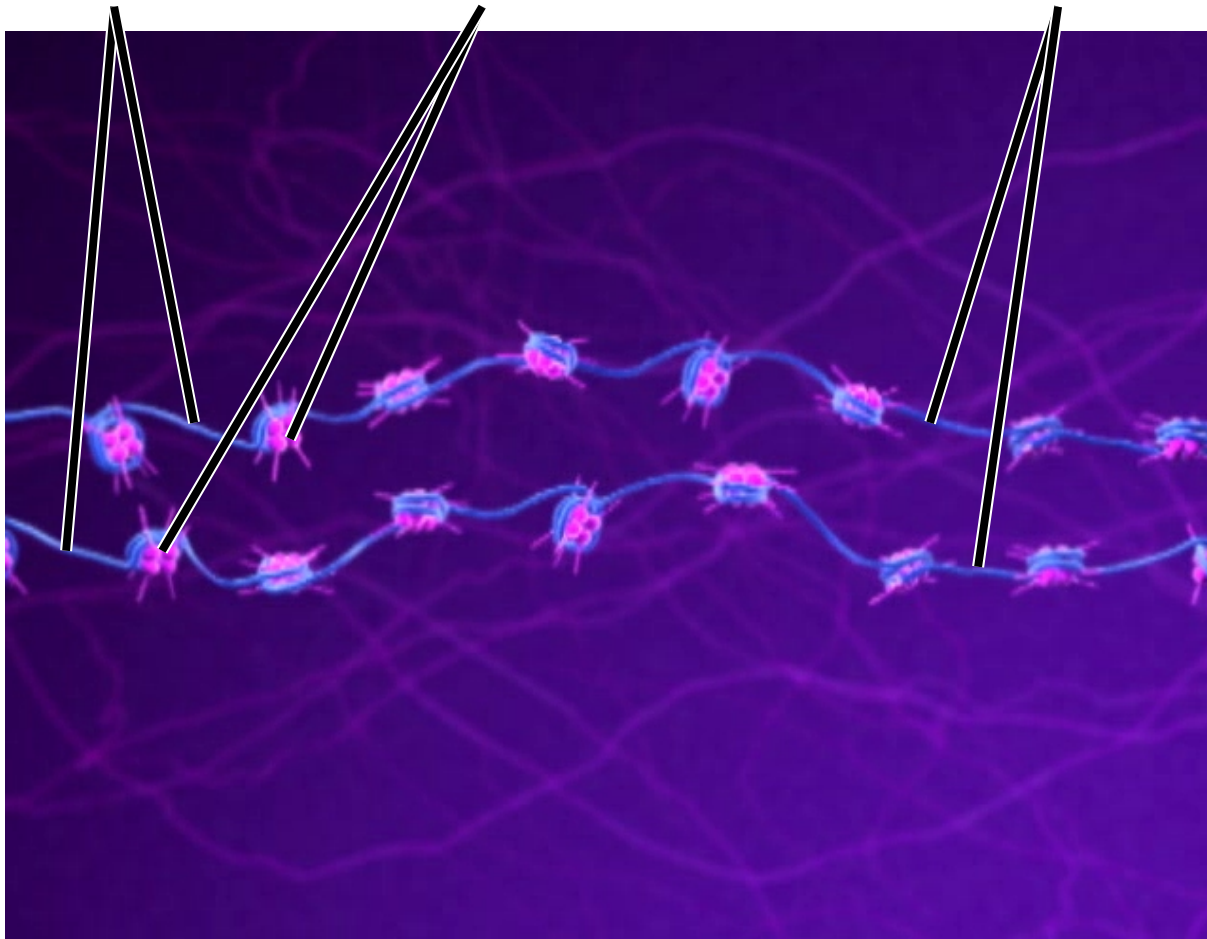




DNA

Histones

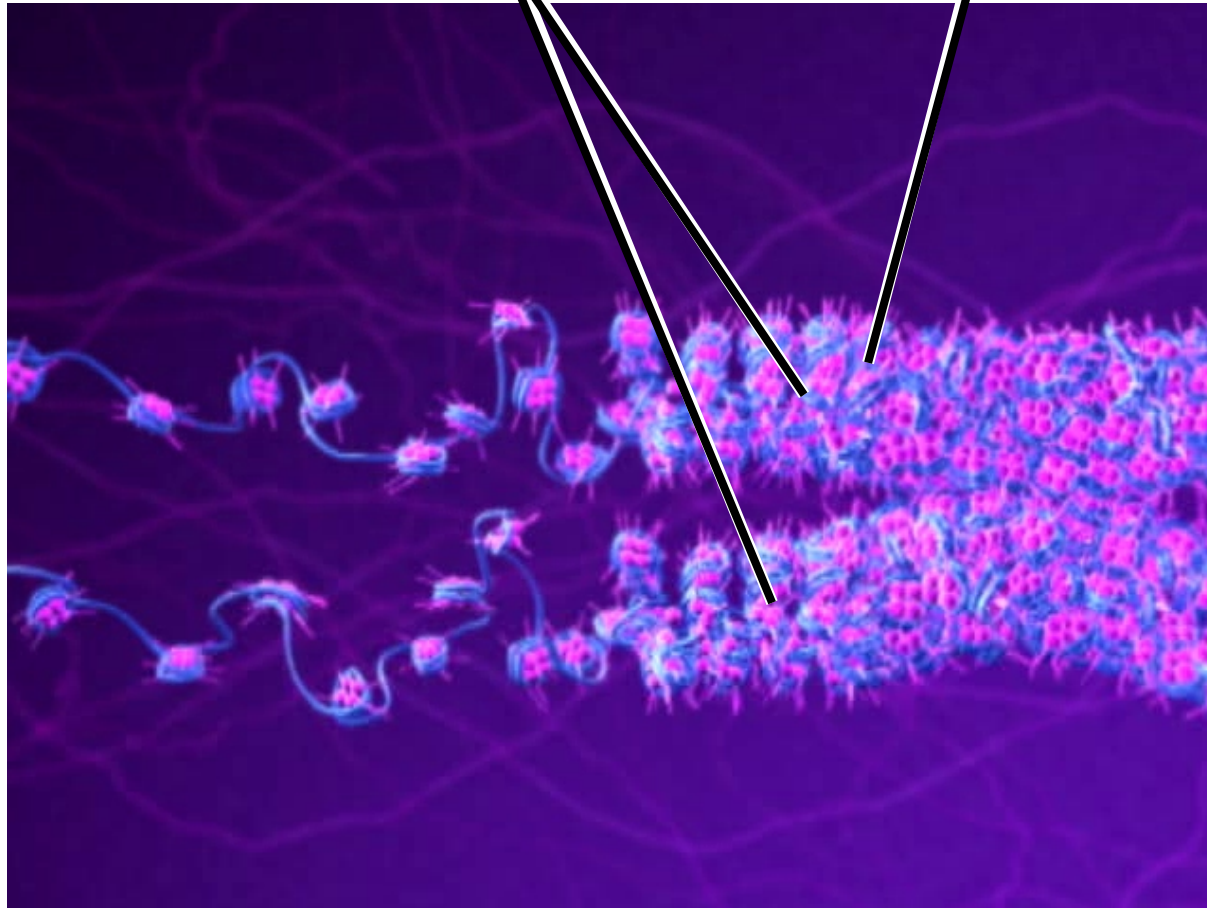
Sister chromatids





Sister chromatids

Tight helical fiber



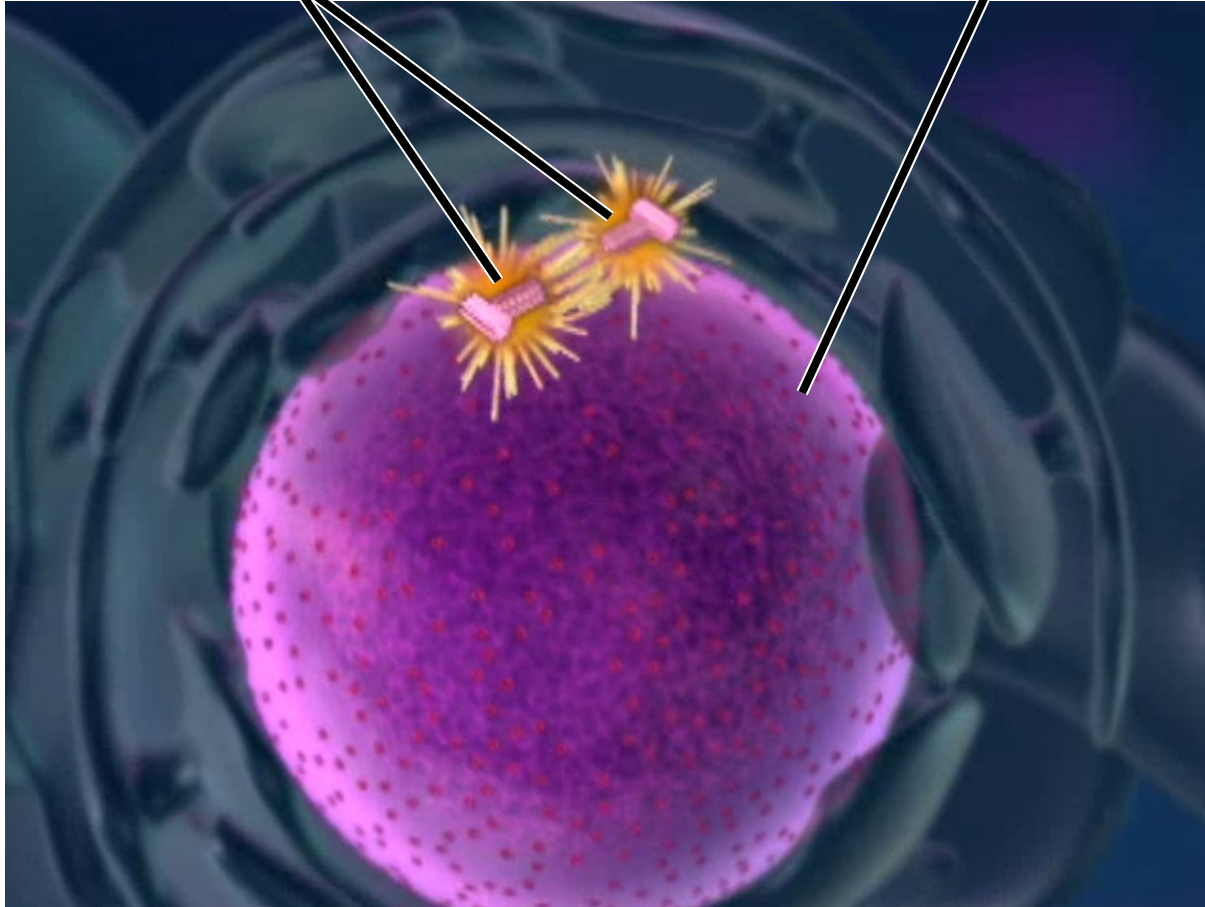
Prophase

(including Prometaphase)



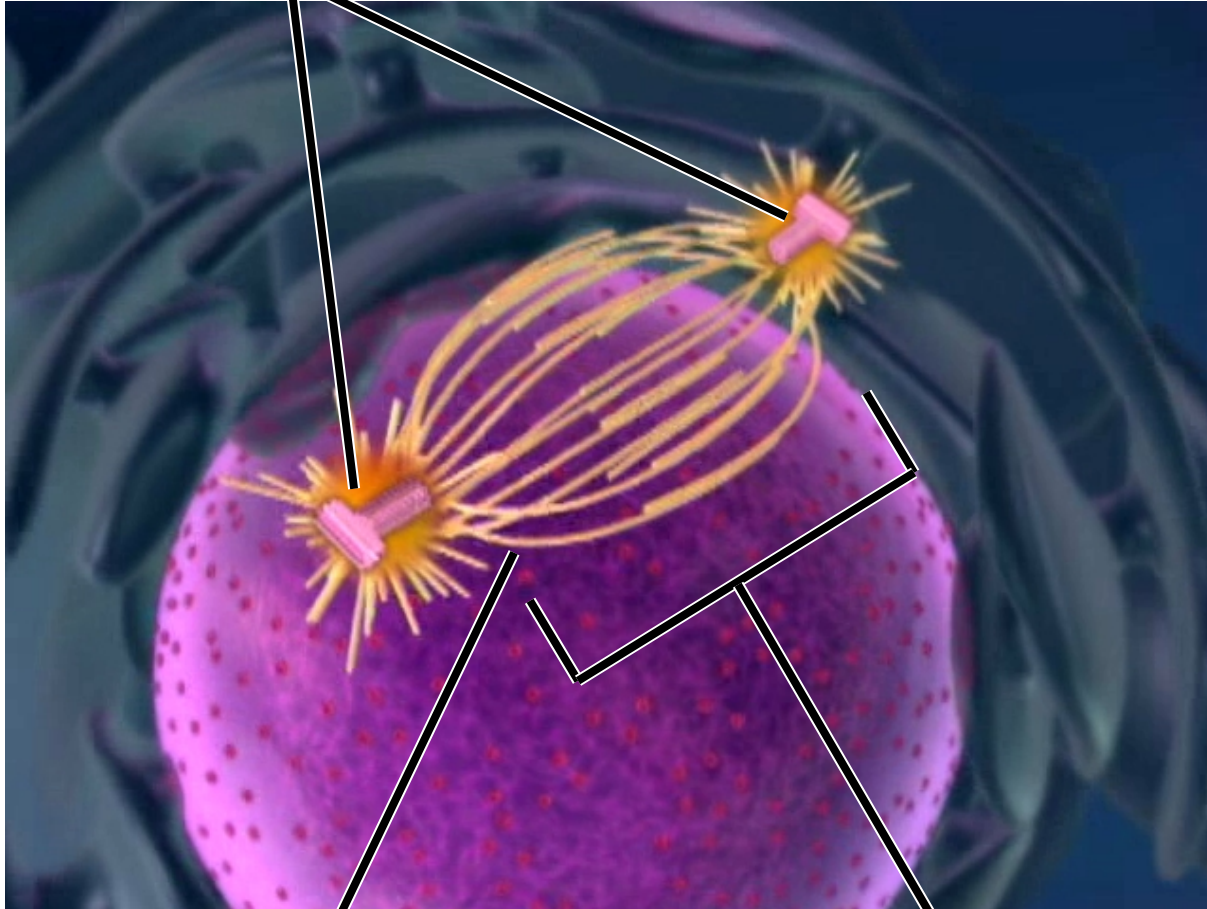
Centrosomes

Nucleus





Centrosomes



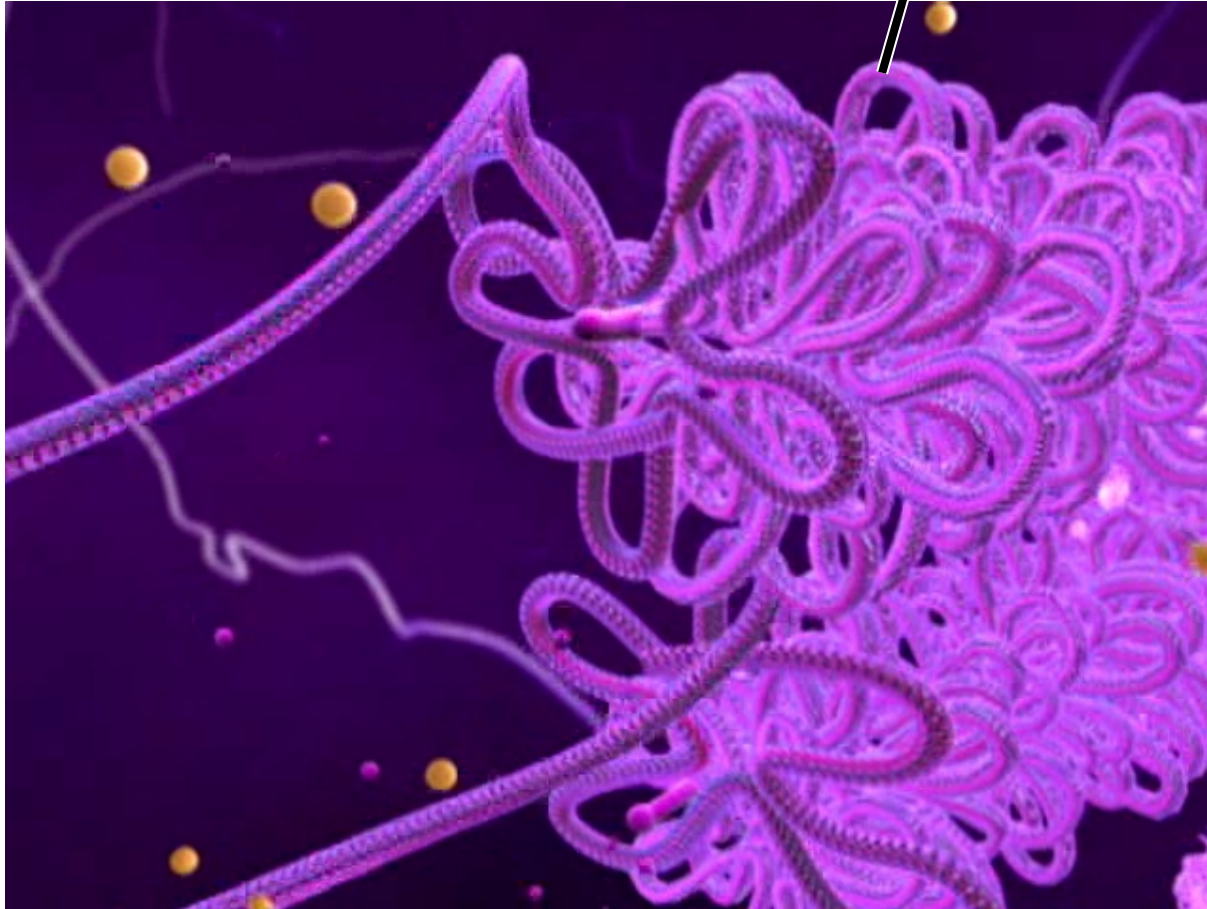
Microtubule

Mitotic
spindle



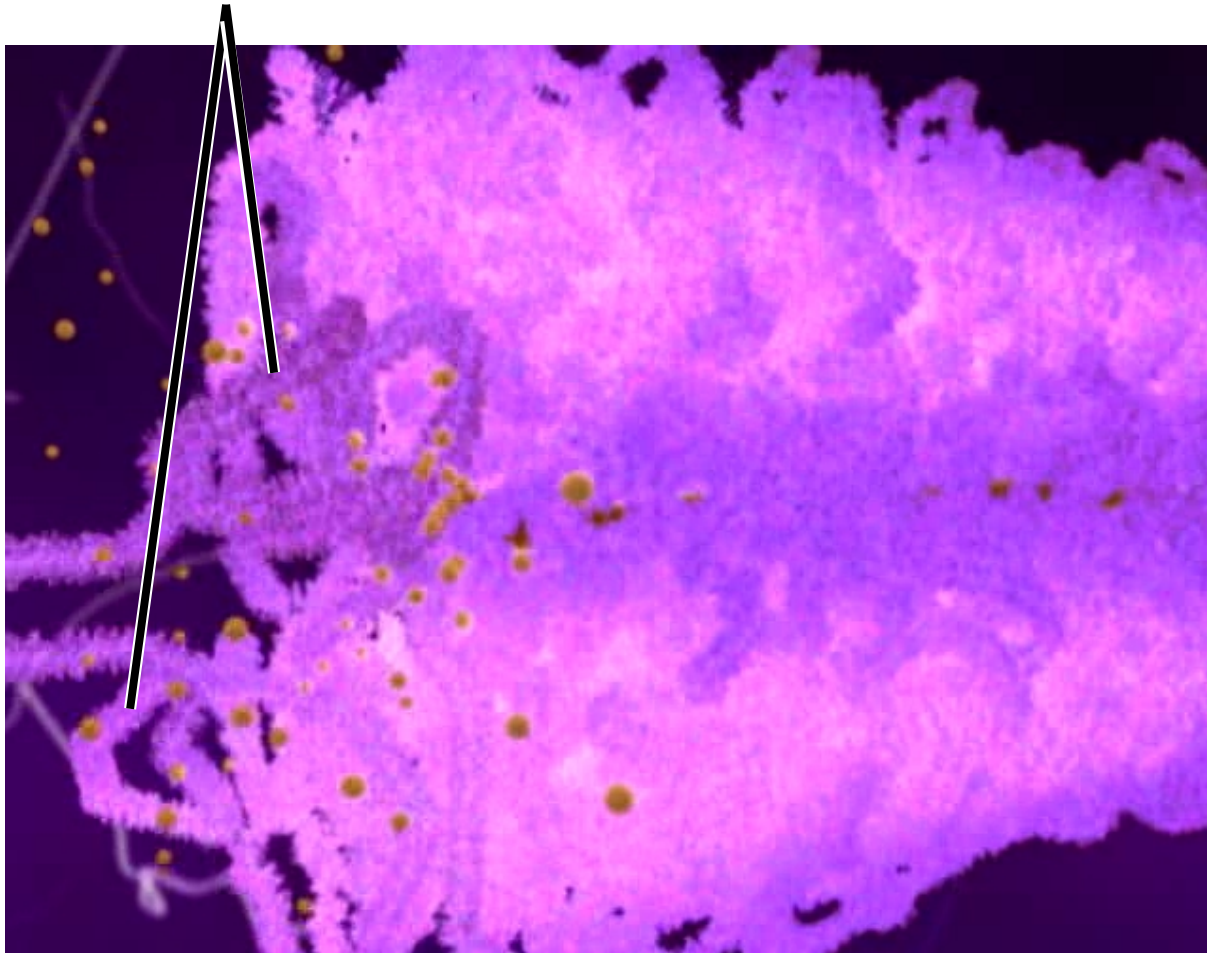
Inside the nucleus

Loop of
DNA



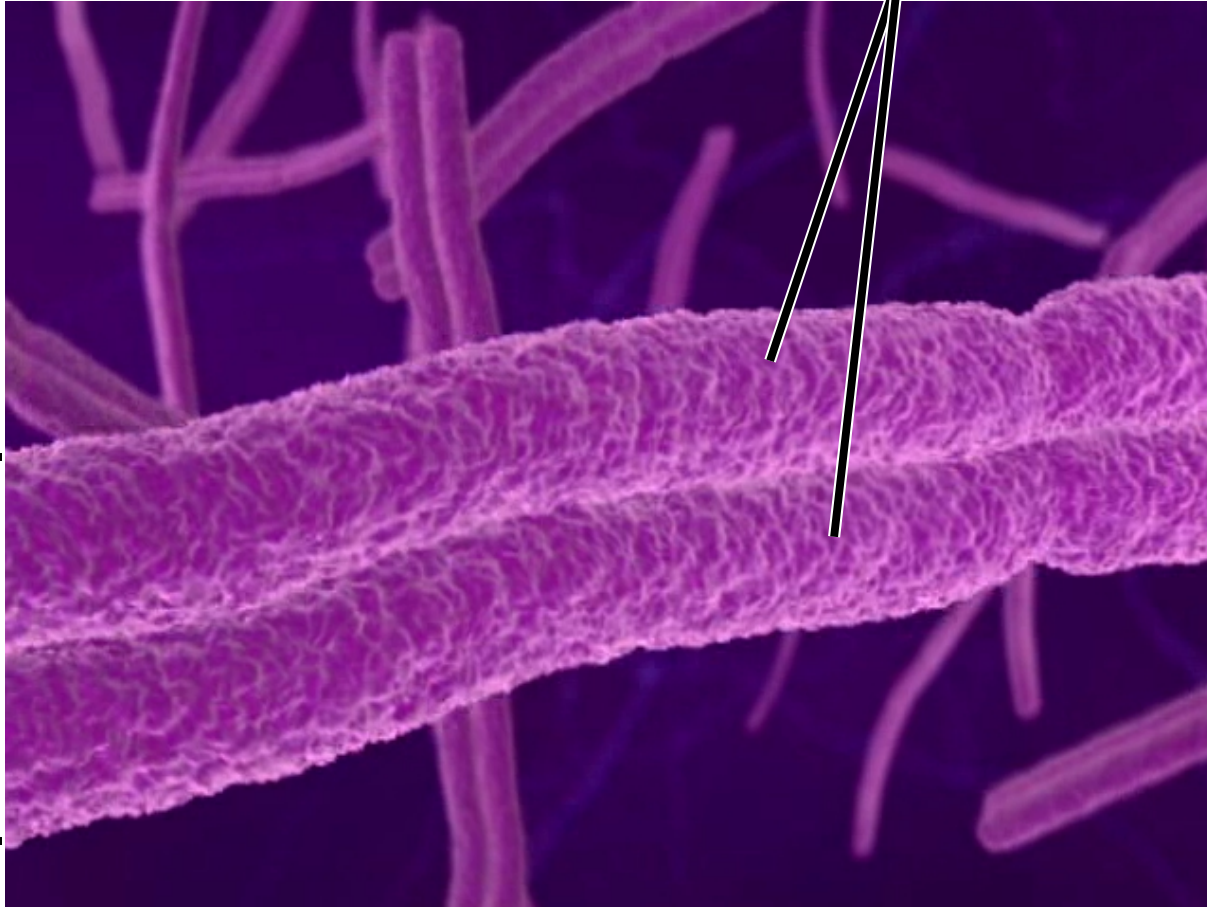


Looped structures folding up





Sister chromatids

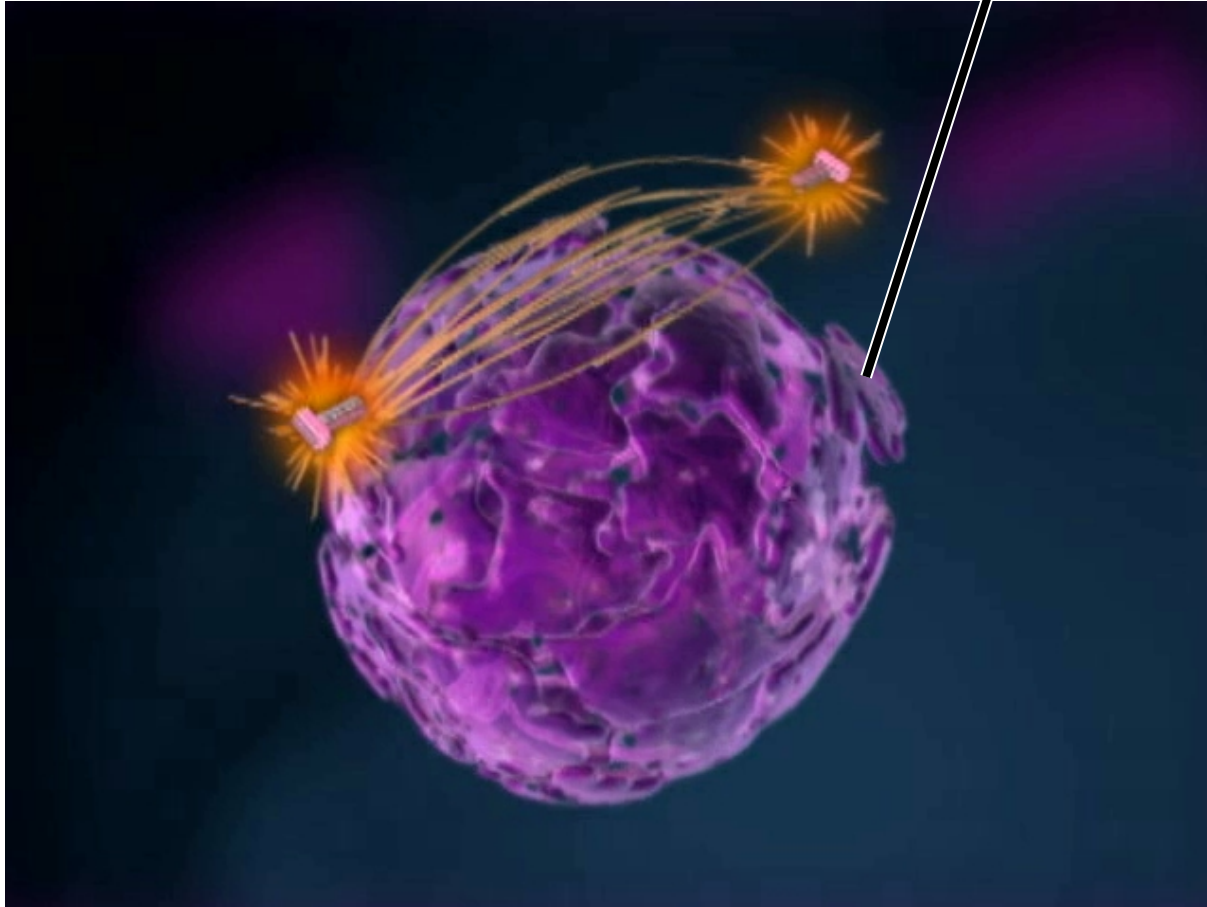


Chromosome



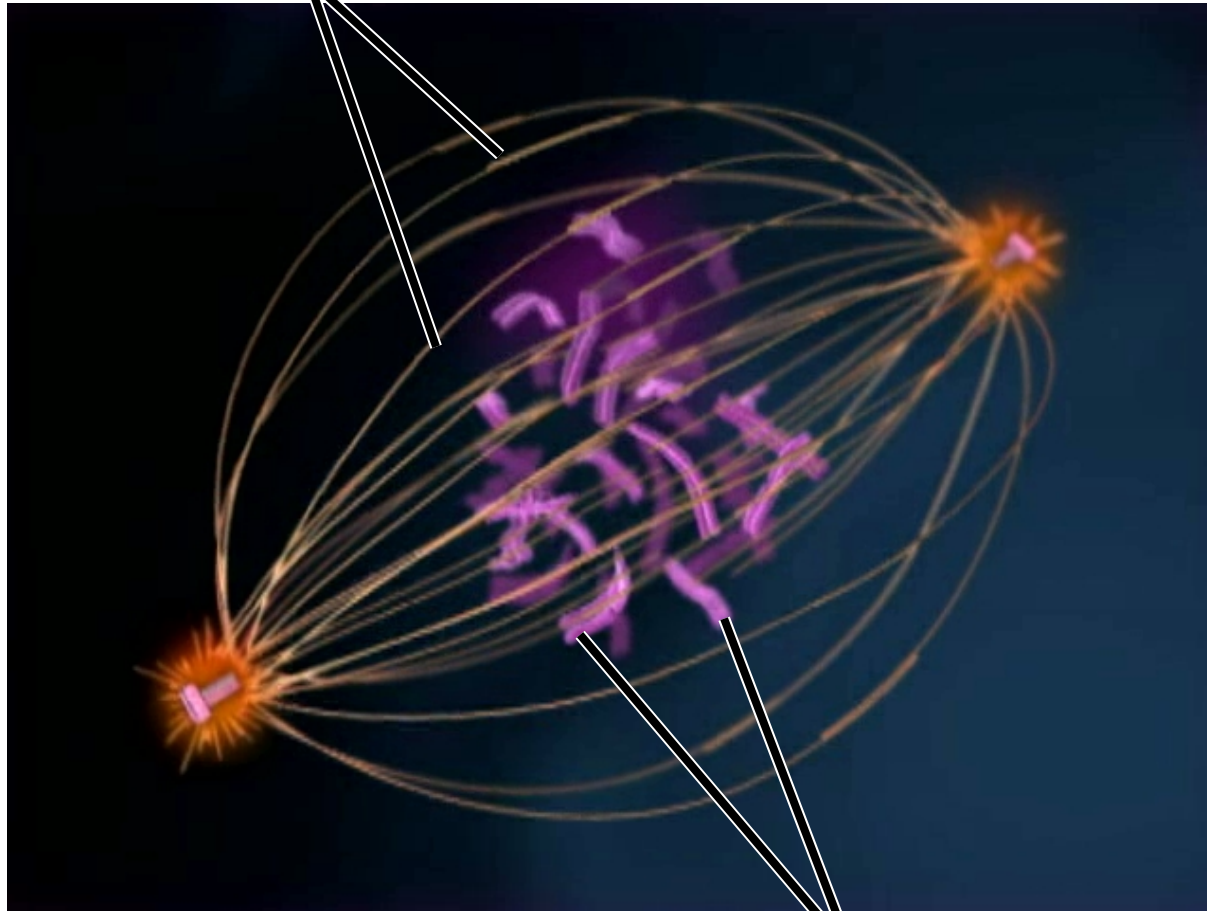


Nuclear envelope
breaking up





Spindle microtubules



Condensed
chromosomes



Sister chromatids

Protein structure
at centromere



Spindle microtubules
attached to chromatid



Spindle microtubules
from one pole

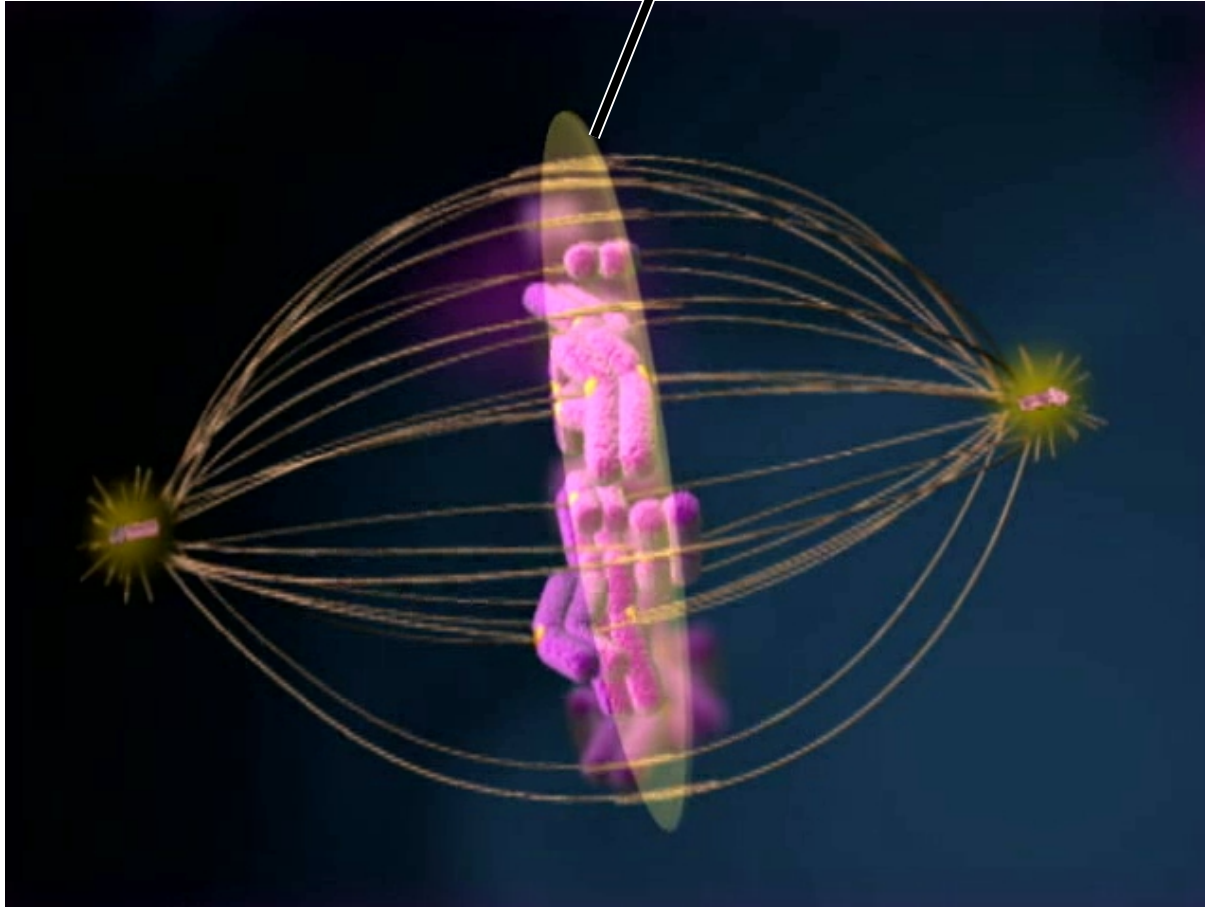
Spindle microtubules
from opposite pole



Metaphase



Imaginary plate at
center of cell

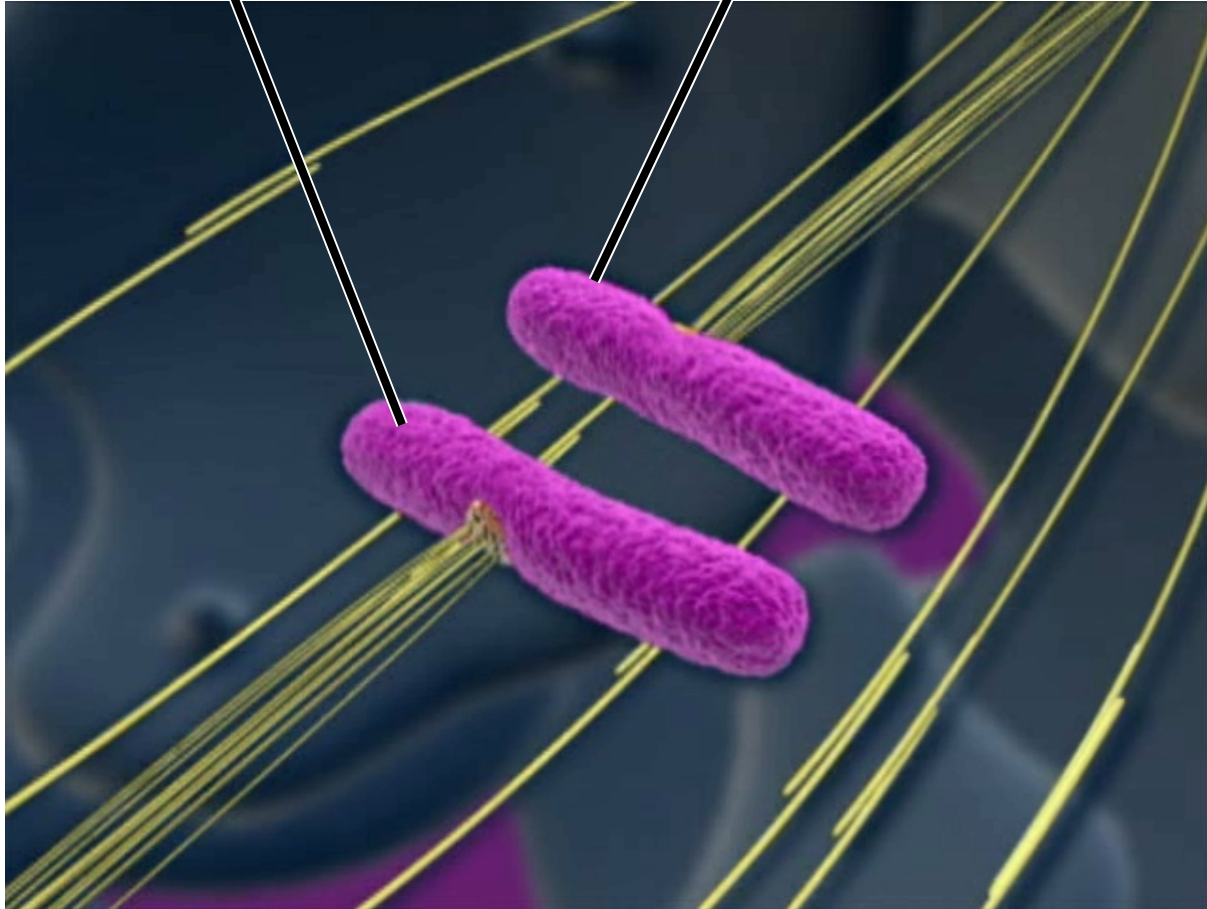


Anaphase



Chromosome

Chromosome





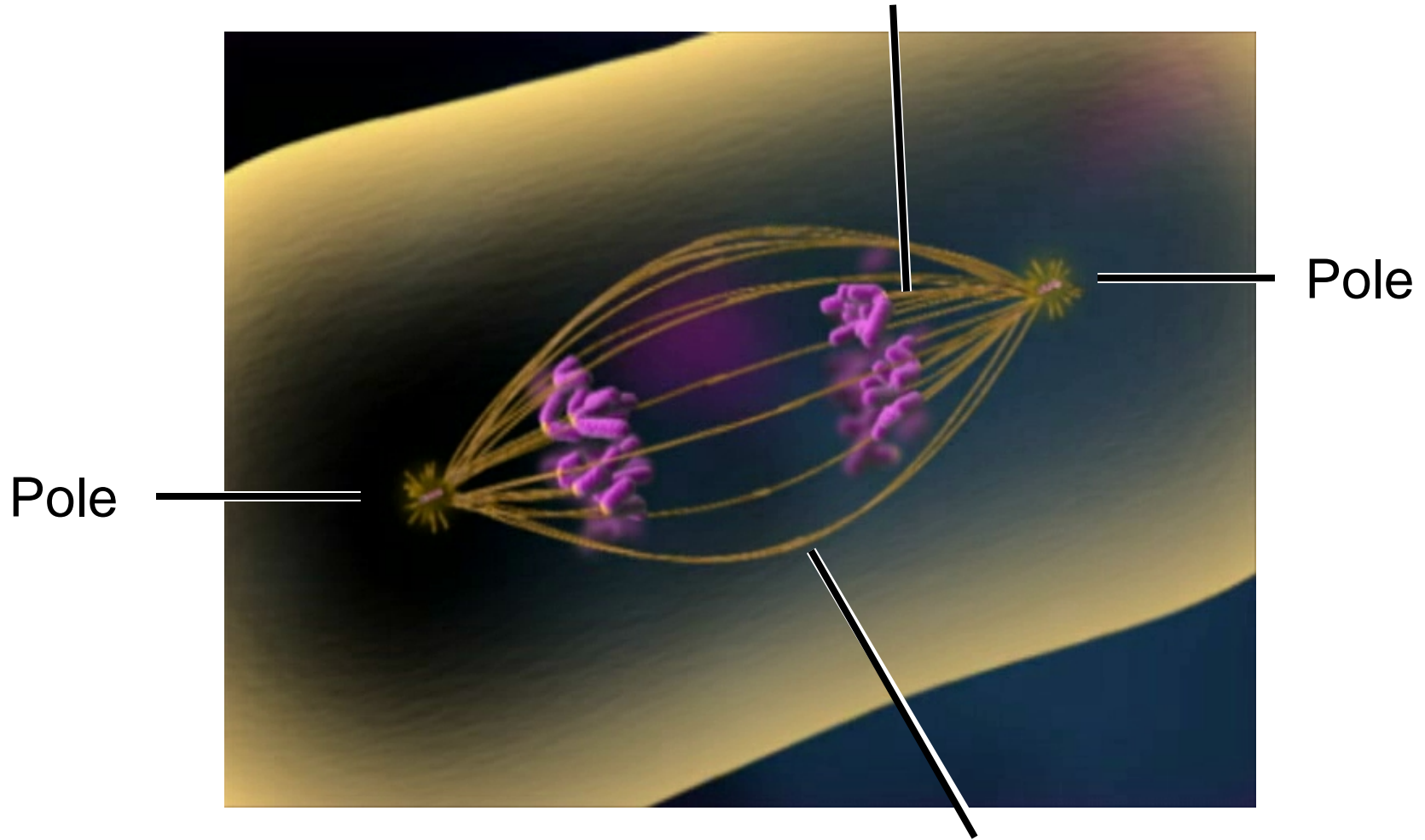
Spindle fibers from one pole
attached to chromosome



Spindle fibers from opposite pole
attached to duplicate chromosome



Shortening spindle fibers
attached to chromosomes



Pole

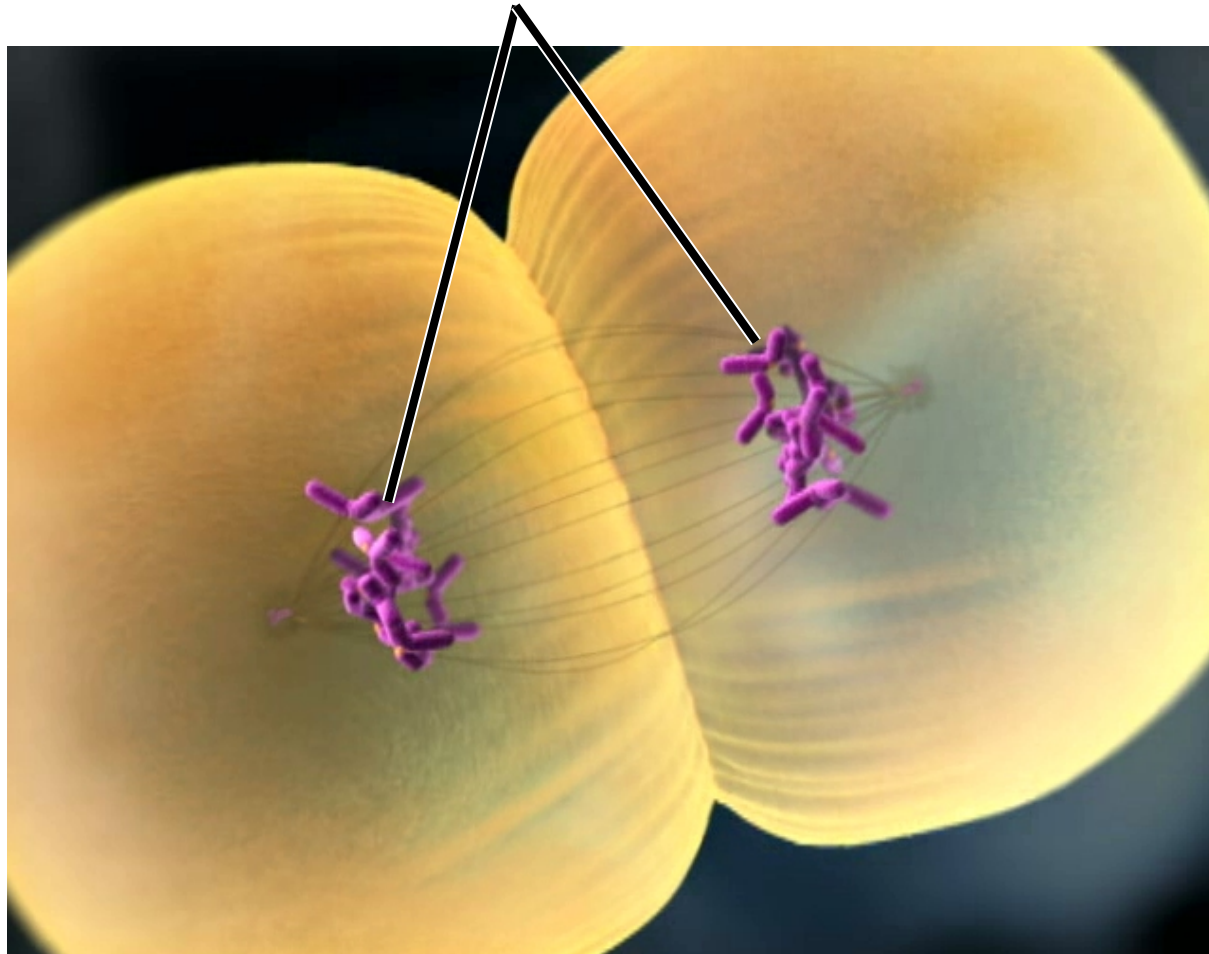
Pole

Lengthening
spindle fibers

Telophase and Cytokinesis

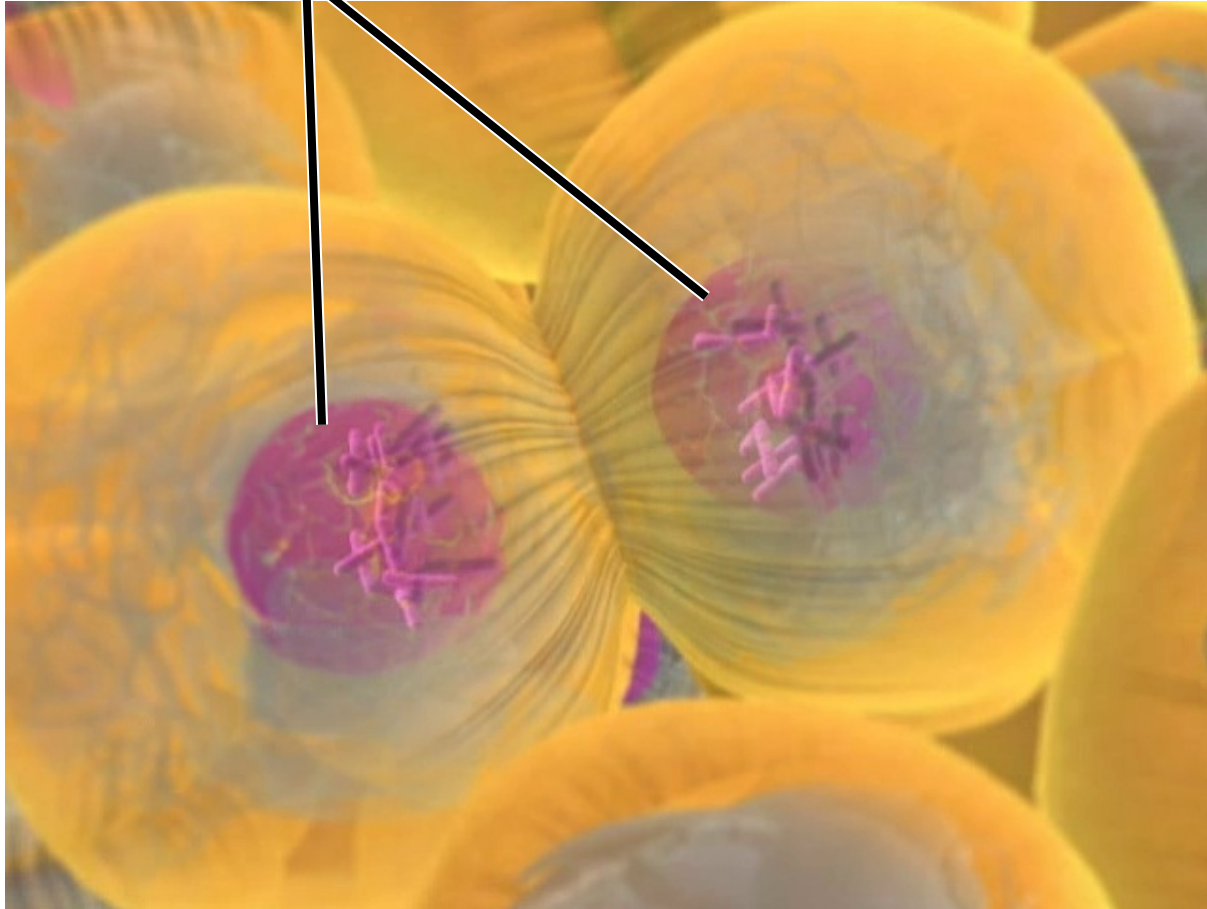


Chromosomes



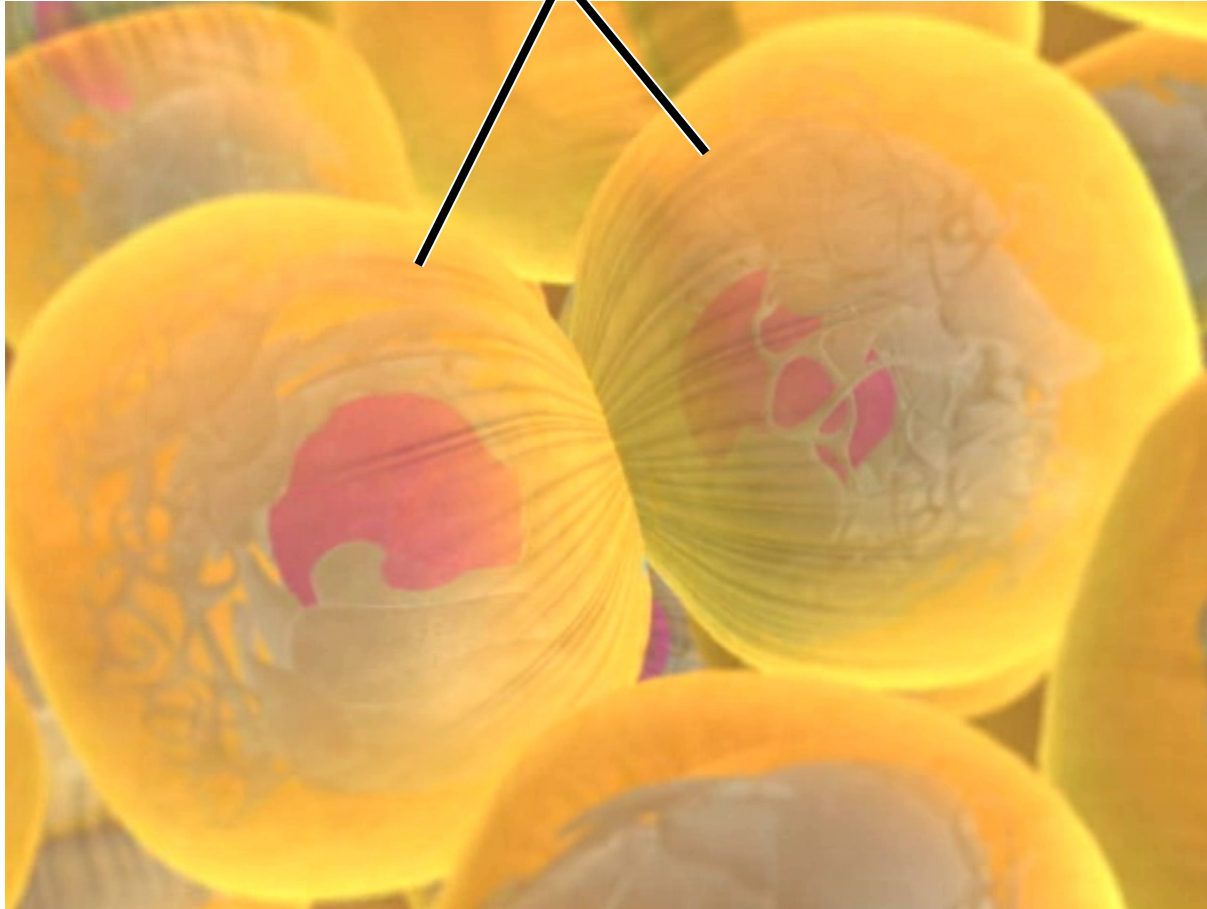


Nuclear envelopes





Daughter cells





Skin cells

